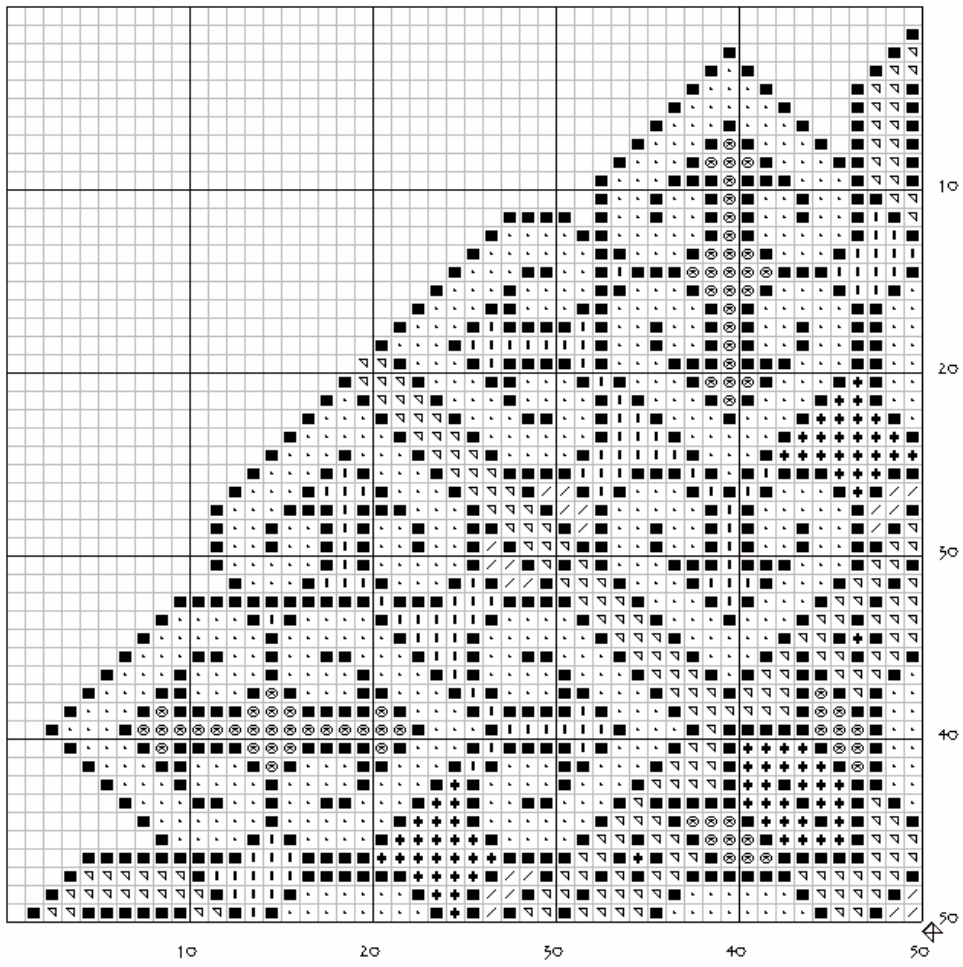
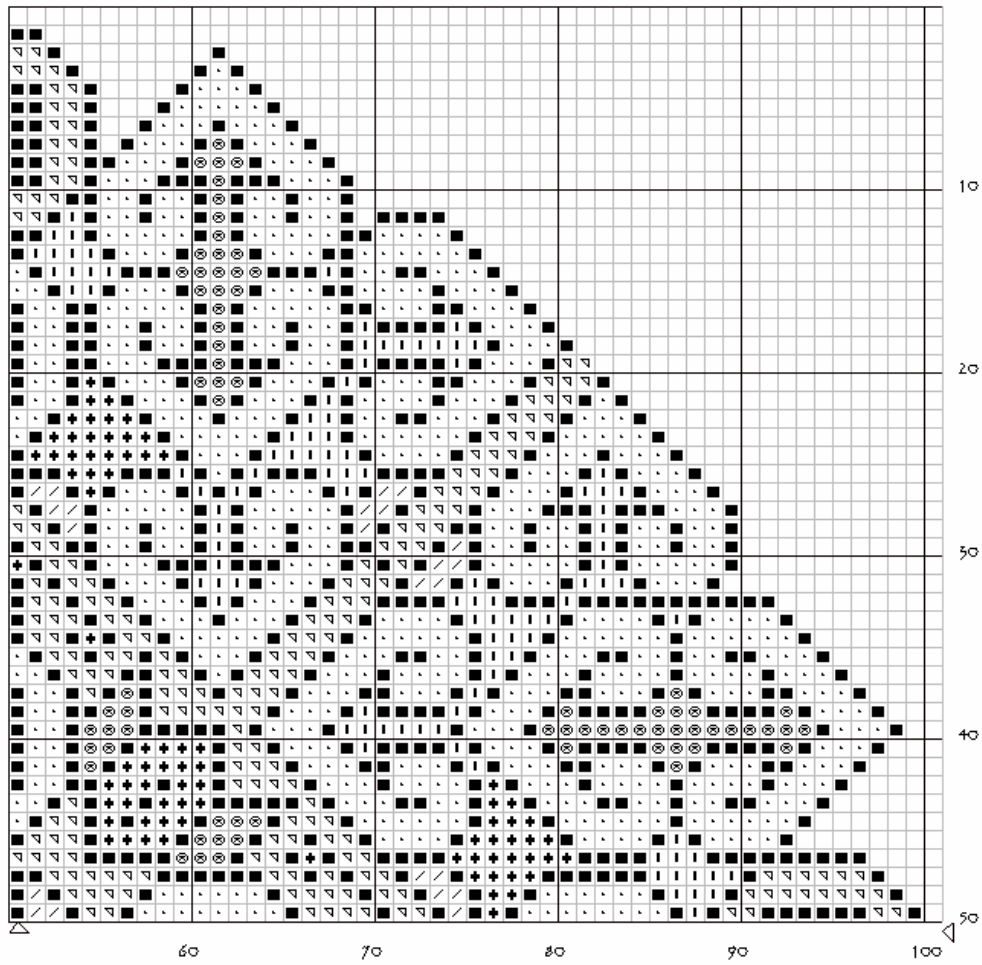


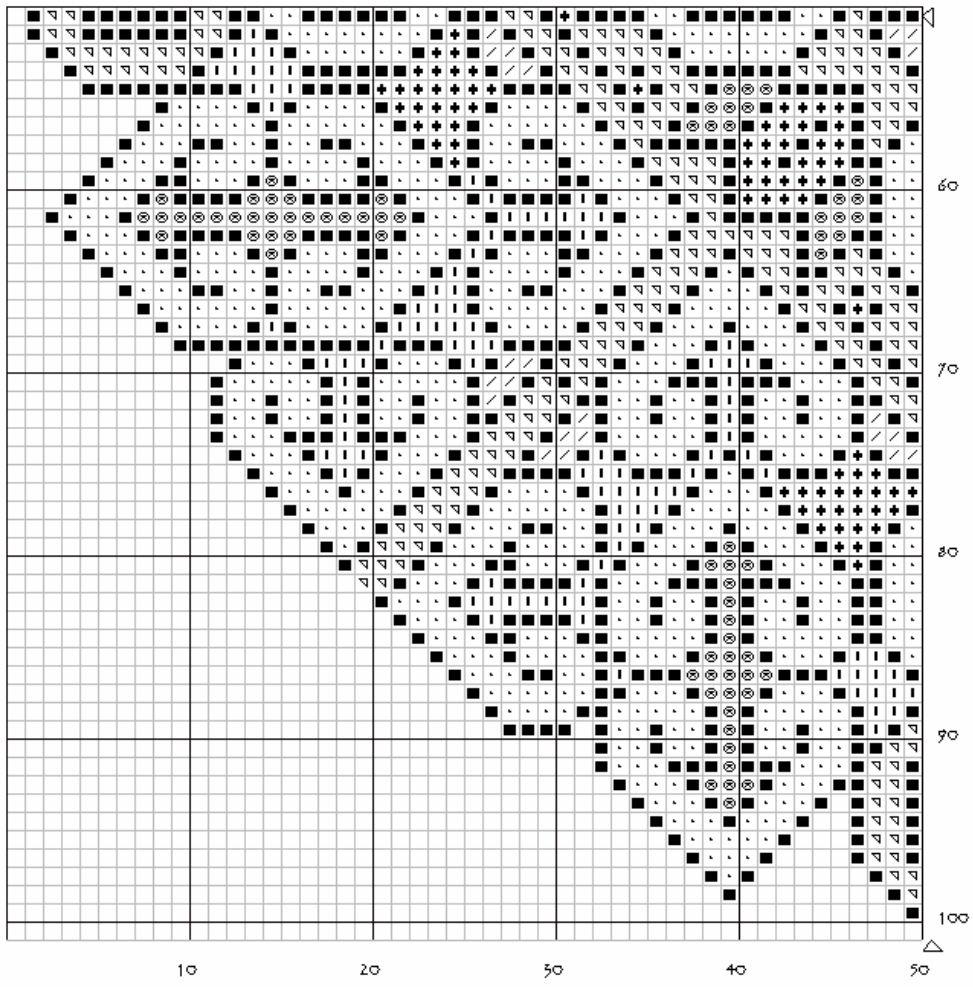
ELEGANT LIGHT

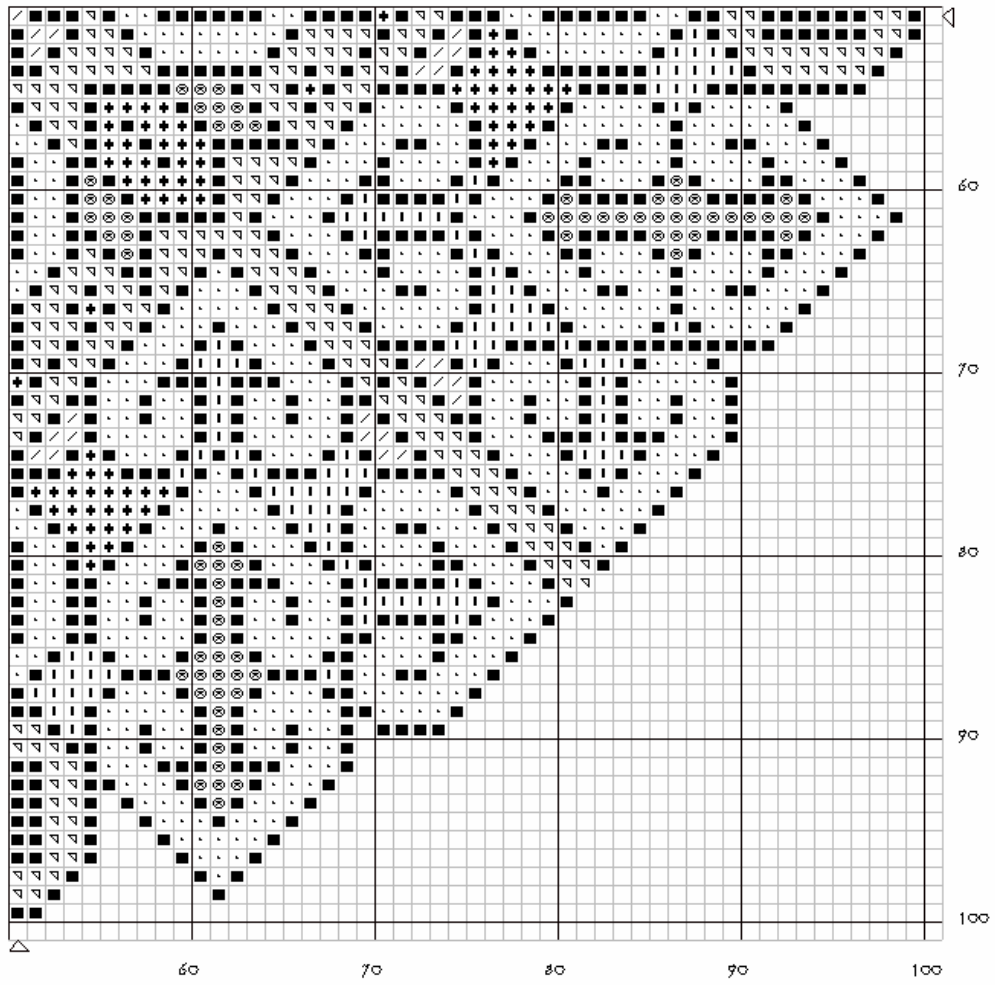
By
SEBA Designs











Elegant Light

Author:	Banu Demirel
Grid Size:	101W x 101H
Cloth Count:	14
Fabric:	Evenweave
Design Area:	7,21" W x 7,21" H (99 x 99 stitches)

Legend: DMC Stranded Cotton

■	414 steel gray - dk	3712 salmon - md	+	161 gray blue		160 md gray blue	⊗	159 gray blue - lt
/	318 steel gray - lt	•	761 salmon - lt					

Instructions:

INSTRUCTIONS

Thank you for your purchase, I hope you enjoy stitching my design as much as I enjoyed designing it...

Kindly note that I have NOT left rows or columns on each side of the pattern as the fabric border.
Please **remember to increase** this figure for moulding.

<http://yamtrees.com/java/xstitchcal.htm> is a good reference to calculate the size of the finished project with different counts.

2 strand of floss is used for regular stitches, 1 strand for backstitches. Color codes are for DMC.

Never hesitate to contact me with your questions or comments through
bdemirel@hotmail.com

Please check my blog for freebies
www.seblackworks.blogspot.com

and for other designs...

www.sebadesigns.com

SEBA Designs ©2007